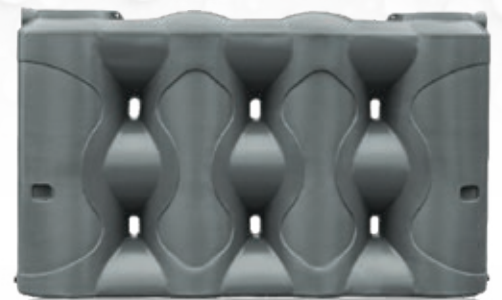


RAPIDPLAS
GROUP

PRODUCT **JUNE 20**
CATALOGUE **23**



A tank for everyone!
ASK YOUR LOCAL RETAILER
FOR A DEAL TODAY!

CONTENTS

5. Large Rainwater Tanks

10. Small & Slimline Rainwater Tanks

14. Tank & Pump Packages

18. Water Storage Accessories

22. Storage Tanks

25. Commercial & Industrial Storage

28. Livestock Watering & Feeding

40. Equine & Animal Care

**GET A
QUOTE IN
15 MINUTES**



← Use our
**AUTOMATED
QUOTE SERVICE**

rapidplas.com/get-a-quote

*Find out more
about our unique
poly formula*



RGBlend²⁰



Watch this short video
to find out what you
need to know about
getting your quote →





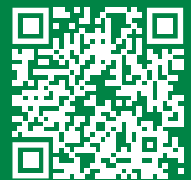
DELIVERY

Watch preparing for your delivery here



MAKING A RAINWATER TANK

Watch here



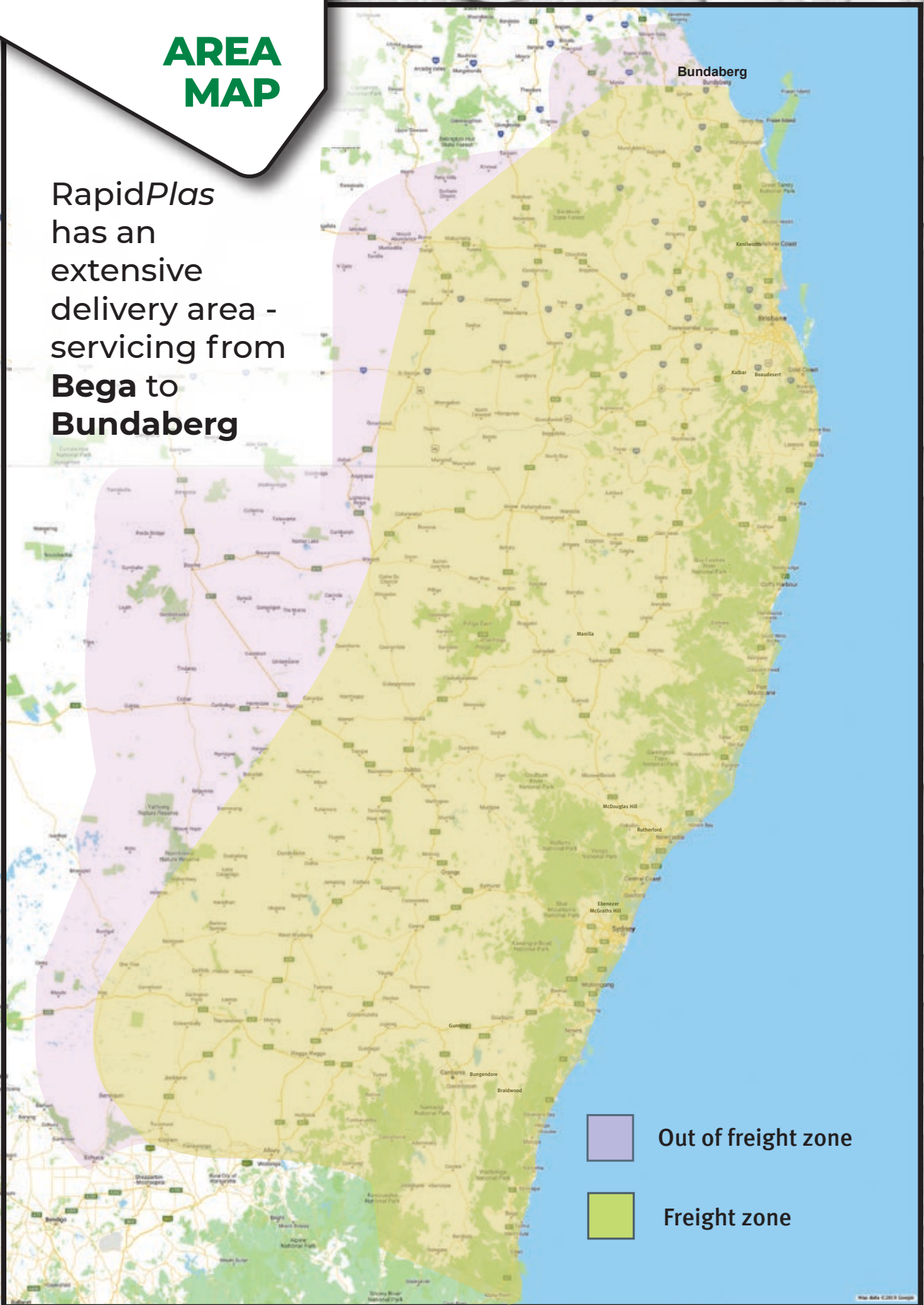


**FIND A DEALER
HERE** →



**AREA
MAP**

RapidPlas has an extensive delivery area - servicing from **Bega to Bundaberg**



24 Tank Colours



<p>Tank White Surfmist®</p>	<p>Gull Grey Shale Grey™</p>	<p>Birch Grey Dune®</p>	<p>Armour Grey Windspray®</p>
<p>Wallaby Wallaby®</p>	<p>Slate Grey Woodland Grey®</p>	<p>Metal Grey Ironstone™</p>	<p>Dark Grey Basalt®</p>
<p>Monument® Charcoal</p>	<p>Black Night Sky®</p>	<p>Heritage Red Manor Red™</p>	<p>Stormedge Blue Blue Ridge™</p>
<p>Mountain Blue Deep Ocean®</p>	<p>Heritage Green Cottage Green™</p>	<p>Rivergum Wilderness®</p>	<p>Mist Green Pale Eucalypt®</p>
<p>Evening Haze</p>	<p>Smooth Cream Classic Cream™</p>	<p>Merino Paperbark®</p>	<p>Desert Haze Sandbank®</p>
<p>Beige</p>	<p>Wheat</p>	<p>Autumn Brown Jasper™</p>	<p>Earthtone Bushland®</p>



Due to the printing process, colours may not be a true representation of the product.

Colour chips are available at our local dealers to help you select your tank colour.

LARGE RAINWATER TANKS

PTY®
RAPIDPLAS



**TANK
MAKERS**



← Watch
Making a rainwater
tank **HERE**

RAPIDPLAS
GROUP

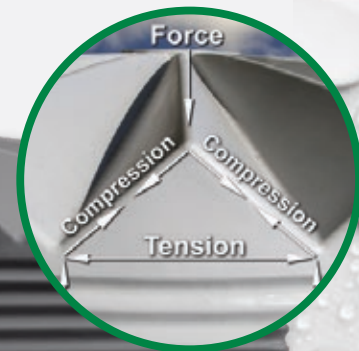
What is Crown Force Technology?



Crown Force™ Technology

The triangular beams interlock into the proven corrugated wall profile providing optimal strength. The Crown Force design allows the tank to breathe, expanding and contracting with changes to temperature and pressure when in use to prevent cracking and roof sinking. Crown Force tanks are moulded as a single piece. No seams or joins.

Triangular Beams The ultimate design for strength and durability.



Every Tank Tested

Exceeding Australian standards



RBlend20

Formulated uniquely to interact with the heating and moulding process to enhance molecular stability and UV protection.

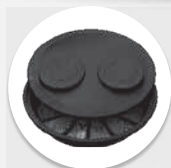


Licence Number AMI 74773
AS/NZS 4766:2006



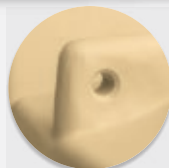
Outlets

2 × 1½" outlets fitted as standard at 3 & 9 o'clock.



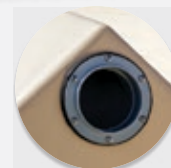
Strainer & Cover

Mosquito proof stainless steel Inlet strainer & strainer cover to help prevent algae growth.



Lifting Lugs

4 × Moulded lugs for safe handling & moving into place.



Overflow

90mm overflow fitted at 6 o'clock for 9000L & above.



1 × 1½" Ball Valve

So your tank is ready for use

Large Rainwater Tanks

Premuim Tank Range



**FREIGHT
FREE
TO
SITE**

FT32000
32000L (7040 GAL)
 Dia: 3990mm
 Inlet Height: 2730mm
 Overall Height: 3230mm
 Outlet Size: 2"
 Strainer Size: 500mm



**FREIGHT
FREE
TO
SITE**

RTC27000
27000L (6000 GAL)
 Dia: 3830mm
 Inlet Height: 2505mm
 Overall Height: 2700mm
 Outlet Size: 1½"
 Strainer Size: 500mm



**FREIGHT
FREE
TO
SITE**

DP619
25000L (5500 GAL)
 Dia: 3600mm
 Inlet Height: 2860mm
 Overall Height: 3190mm
 Outlet Size: 2"
 Strainer Size: 500mm



**FREIGHT
FREE
TO
SITE**

RTC22500LP
22500L (5000 GAL)
LOW PROFILE
 Dia: 3840mm
 Inlet Height: 2140mm
 Overall Height: 2350mm
 Outlet Size: 1½"
 Strainer Size: 500mm



**FREIGHT
FREE
TO
SITE**

RTC22500
22500L (5000 GAL)
 Dia: 3510mm
 Inlet Height: 2505mm
 Overall Height: 2710mm
 Outlet Size: 1½"
 Strainer Size: 500mm



**FREIGHT
FREE
TO
SITE**

RTC13500
14000L (3080 GAL)
 Dia: 3000mm
 Inlet Height: 2230mm
 Overall Height: 2335mm
 Outlet Size: 1½"
 Strainer Size: 500mm



**FREIGHT
FREE
TO
SITE**

RTC10500
10500L (2310 GAL)
 Dia: 2520mm
 Inlet Height: 2260mm
 Height: 2450mm
 Outlet Size: 1½"
 Strainer Size: 500mm



**FREIGHT
FREE
TO
SITE**

RTC09000
9000L (1980 GAL)
 Dia: 2350mm
 Inlet Height: 2220mm
 Overall Height: 2430mm
 Outlet Size: 1½"
 Strainer Size: 500mm



**FREIGHT
FREE
TO
STORE**

RTC07000
7000L (1540 GAL)
 Dia: 2380mm
 Inlet Height: 1740mm
 Overall Height: 1950mm
 Outlet Size: 1½"
 Strainer Size: 500mm

NEW IMPROVED!

TANKMAKERS

LARGE RAINWATER TANKS

The VALUE RANGE!

NEW!

Lifting lugs



RBlend20

Formulated uniquely to interact with the heating and moulding process to enhance molecular stability and UV protection.

NEW!

Now with **2 Outlets**
at 3 & 9 o'clock



Every Tank Tested

Exceeding Australian standards

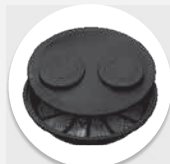


Licence Number AMI 74773
AS/NZS 4766:2006



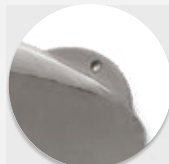
Outlets

2 x 1 1/2" outlets fitted as standard at 3 & 9 o'clock.



Strainer & Cover

Mosquito proof stainless steel Inlet strainer & strainer cover to help prevent algae growth.



Lifting Lugs

4 x Moulded lugs for safe handling & moving into place.



Overflow & Mosquito Screen

at 12 o'clock



1 x 1 1/2" Ball Valve

So your tank is ready for use

Large Rainwater Tanks

Value Tank Range



TM22500-T
22500L TALL (5000 GAL)
 Dia: 3350mm
 Height: 3000mm
 Outlet Size: 1½"
 Overflow: 90mm
 Strainer Size: 500mm



TM22500-S
22500L SQUAT (5000 GAL)
 Dia: 3800mm
 Inlet Height: 2250mm
 Overall Height: 2500mm
 Outlet Size: 1½"
 Overflow: 90mm
 Strainer Size: 500mm



TM18000
18000L (4000 GAL)
 Dia: 3350mm
 Height: 2580mm
 Outlet Size: 1½"
 Overflow: 90mm
 Strainer Size: 500mm



TM13500
13500L (3000 GAL)
 Dia: 2800mm
 Height: 2500mm
 Outlet Size: 1½"
 Overflow: 90mm
 Strainer Size: 400mm



TM9000
9000L (1980 GAL)
 Dia: 2800mm
 Height: 1790mm
 Outlet Size: 1½"
 Overflow: 90mm
 Strainer Size: 400mm



TM5000-T
5000L TALL (1120 GAL)
 Dia: 1800mm
 Height: 2250mm
 Outlet Size: 1"
 Overflow: 90mm
 Strainer Size: 400mm



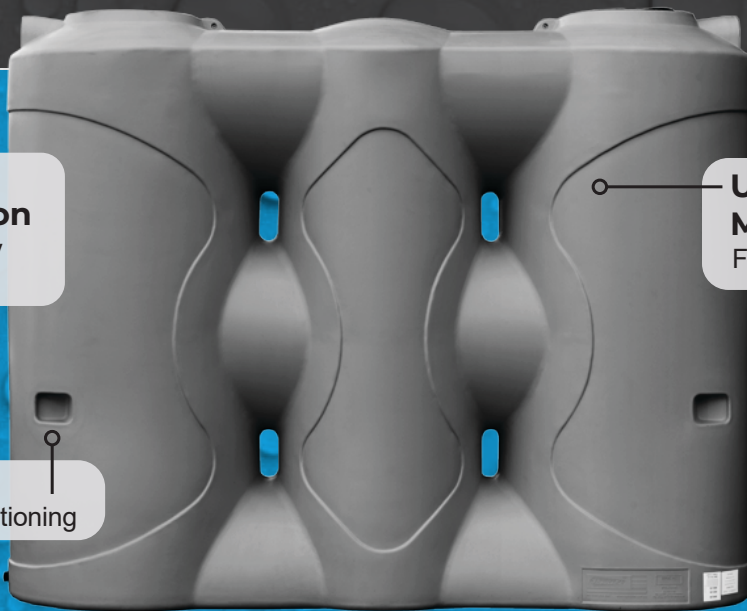
TM5000-S
5000L SQUAT (1100 GAL)
 Dia: 2000mm
 Inlet Height: 1850mm
 Height: 1900mm
 Outlet Size: 1"
 Overflow: 90mm
 Strainer Size: 400mm

SMALL & SLIMLINE RAINWATER TANKS



Slimline Rainwater Tanks

SMALL & SLIMLINE RAINWATER TANKS



One-Piece Construction

For wall integrity & strength

Unique Pattern Mouldings

For style & positioning

Hand Grips

For ease of positioning



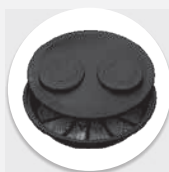
Free delivery to your nearest dealer

STANDARD INCLUSIONS



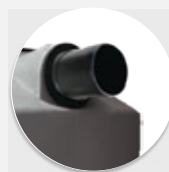
Outlets

2 x 1" BSP Outlets. One on each end for flexible installation



Strainer & Cover

2 x Mosquito proof stainless steel Inlet strainer & strainer cover to help prevent algae growth



Overflow

90mm overflow that can be fitted either end of the tank (supplied unfitted)



1 x 1" Ball Valve

So your tank is ready for use

Small Round Rainwater Tanks



Free delivery to your nearest dealer

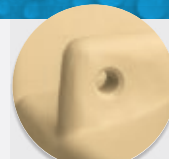
STANDARD INCLUSIONS



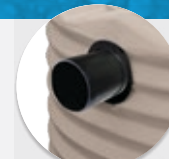
2 x Outlets



Strainer & Cover



Lifting Lugs



Overflow (unfitted)



1" Ball Valve

STANDARD TO THE YARRIN RANGE



RGLblend20

Constructed with our own unique 'RGLblend 20' food grade raw material. This virgin grade material is processed in house under controlled conditions providing extra strength and UV protection



Every Tank Tested
Exceeding Australian standards



See range on page 4

Slimline Rainwater Tanks

Residential & Trade

Yarrin™

SMALL & SLIMLINE RAINWATER TANKS



YRSL05000

**5000L (1100 GAL)
SLIMLINE**

Length: 3320mm
Width: 1040mm
Overall Height: 2020mm
Strainer Size: 410mm



YRSL05000TL

**5000L (1100 GAL)
SLIMLINE**

Length: 3250mm
Width: 975mm
Overall Height: 2200mm
Strainer Size: 410mm



YRSL04000

**4000L (880 GAL)
SLIMLINE**

Length: 2945mm
Width: 935mm
Overall Height: 2020mm
Strainer Size: 410mm



YRSL03000

**3000L (660 GAL)
SLIMLINE**

Length: 2515mm
Width: 870mm
Overall Height: 1955mm
Strainer Size: 410mm



YRSL03000SS

**3000L (660 GAL)
SUPER SLIM**

Length: 3010mm
Width: 700mm
Overall Height: 1965mm
Strainer Size: 410mm



YRSL03000LP

**3000L (660 GAL)
SLIMLINE LOW PROFILE**

Length: 3030mm
Width: 750mm
Overall Height: 1800mm
Strainer Size: 410mm



YRSL02000

**2000L (440 GAL)
SLIMLINE**

Length: 2450mm
Width: 750mm
Overall Height: 1725mm
Strainer Size: 410mm



YR02000SL

**2000L (440 GAL)
SLIMLINE**

Length: 2300mm
Width: 600mm
Overall Height: 2025mm
Strainer Size: 410mm



YR01000SL

**1000L (220 GAL)
SLIMLINE**

Length: 1770mm
Width: 500mm
Overall Height: 1655mm
Strainer Size: 320mm



YR00500SL

**500L (110 GAL)
SLIMLINE**

Length: 1210mm
Width: 430mm
Overall Height: 1360mm
Strainer Size: 320mm

Courtyard Package

TANK PACKAGES AVAILABLE

- **500L Courtyard Package** (CYPACKAGE500)
- **500L Low Profile Courtyard Package** (CYPACKAGE500LP)
- **1100L Low Profile Courtyard Package** (CYPACKAGE1100LP)
- **2200L Low Profile Courtyard Package** (CYPACKAGE2200LP)

PACKAGE INCLUDES

Rainwater Tank
(From 500L to 2200L)



3/4" Ball Valve Garden Tap with Lever Handle (TAP19)

Rainwater Tank Stand (RTTS0511)

15m Garden Hose (RTAGH18)

Small Corrugated Rainwater Tanks

Residential & Trade

Yarrin™



YR05000

5100L (1100 GAL)

Dia: 1840mm
Inlet Height: 2110mm
Overall Height: 2190mm
Outlet Size: 1½"
Strainer Size: 410mm



YR05000LP

5000L (1100 GAL) LOW PROFILE

Dia: 2150mm
Inlet Height: 1560mm
Overall Height: 1680mm
Outlet Size: 1½"
Strainer Size: 500mm



YR04500LP

4700L (1030 GAL) LOW PROFILE

Dia: 2370mm
Inlet Height: 1170mm
Overall Height: 1350mm
Outlet Size: 1½"
Strainer Size: 500mm



YR04500

4500L (990 GAL)

Dia: 1700mm
Inlet Height: 2200mm
Overall Height: 2290mm
Outlet Size: 1½"
Strainer Size: 410mm



YR04000LP

4000L (880 GAL) LOW PROFILE

Dia: 2150mm
Inlet Height: 1310mm
Overall Height: 1420mm
Outlet Size: 1½"
Strainer Size: 410mm



YR03000

3000L (660 GAL)

Dia: 1710mm
Inlet Height: 1680mm
Overall Height: 1780mm
Outlet Size: 1½"
Strainer Size: 410mm



YR02200LP

2250L (500 GAL) LOW PROFILE

Dia: 1700mm
Inlet Height: 1200mm
Overall Height: 1290mm
Outlet Size: 1½"
Strainer Size: 410mm



YR02200

2200L (480 GAL)

Dia: 1350mm
Inlet Height: 1900mm
Overall Height: 1960mm
Outlet Size: 1"
Strainer Size: 320mm



YR01100LP

1100L (240 GAL) LOW PROFILE

Dia: 1350mm
Inlet Height: 1000mm
Overall Height: 1100mm
Outlet Size: 1"
Strainer Size: 320mm



YR01100

1100L (240 GAL)

Dia: 1050mm
Inlet Height: 1550mm
Overall Height: 1600mm
Outlet Size: 1"
Strainer Size: 320mm



YR00500LP

550LP (120 GAL) LOW PROFILE

Dia: 1050mm
Inlet Height: 850mm
Overall Height: 910mm
Outlet Size: 1"
Strainer Size: 320mm



YR00500

500L (110 GAL)

Dia: 800mm
Inlet Height: 1320mm
Overall Height: 1360mm
Outlet Size: 1"
Strainer Size: 320mm

TANK & PUMP PACKAGES

House & Garden Packages

Rapid Plas rainwater tank packages are designed to cater for all your water storage solutions

- 💧 Off mains household water supply
- 💧 Small house and granny flats water supply
- 💧 Garden care
- 💧 Car or boat washing
- 💧 Topping up pools



Small Garden Package

This package provides enough pressure to run a few garden taps, hoses and sprinklers. Package available in tank sizes 1100L to 32,000L in both round and slimline styles

PACKAGE INCLUDES

- 1 x Rainwater tank (your choice of tank size)
- 90mm Overflow kit
- Quick connection kit between your tank & pump
- 50L/m pump
- Matching pump cover
- 2 Outlets
- Strainer & strainer cover



TANK & PUMP PACKAGES



	CODE	CAPACITY (LITRES)	DIMENSIONS L X W X H (mm)
SLIMLINE	YRSL03000.SGPACK	3000	2515 x 870 x 1950
	YRSL04000.SGPACK	4000	2945 x 935 x 2020
	YRSL05000.SGPACK	5000	3320 x 1040 x 2020

	CODE	CAPACITY (LITRES)	DIAMETER (mm)	INLET HEIGHT (mm)	OVERALL HEIGHT (mm)
ROUND RAINWATER TANKS	YR01100.SGPACK	1100	1050	1550	1600
	YR02200.SGPACK	2200	1350	1900	1960
	YR03000.SGPACK	3000	1710	1680	1780
	YR05000.SGPACK	5000	1840	2110	2190
	RTC07000.SGPACK	7000	2380	1740	1950
	RTC09000.SGPACK	9000	2350	2220	2430
	RTC10500.SGPACK	10000	2520	2260	2450
	RTC13500.SGPACK	14000	3000	2150	2420
	RTC22500.SGPACK	22500	3510	2390	2750
	RTC27000.SGPACK	27000	3840	2440	2700
FT32000.SGPACK	32000	3990	2730	3230	

Whole House Package

This packages includes a pump with enough pressure to run your whole house including kitchen, bathroom, laundry and toilets.

PACKAGE INCLUDES

Package also available in tank sizes 7000L to 32000L

- 1 x Rainwater tank (your choice of tank size)
- 90mm Overflow kit
- Quick connection kit between your tank & pump
- 100L/m pump
- Matching pump cover
- 2 Outlets
- Strainer & strainer cover



	CODE	CAPACITY (LITRES)	DIAMETER (mm)	INLET HEIGHT (mm)	OVERALL HEIGHT (mm)
ROUND RAINWATER TANKS	RTC07000.WHPACK	7000	2380	1740	1950
	RTC09000.WHPACK	9000	2350	2220	2430
	RTC10500.WHPACK	10000	2520	2260	2450
	RTC13500.WHPACK	14000	3000	2150	2420
	RTC22500.WHPACK	22500	3510	2390	2750
	RTC27000.WHPACK	27000	3840	2440	2700
	FT32000.WHPACK	32000	3990	2730	3230

Building out of town?

WATER & SEPTIC PACKAGE

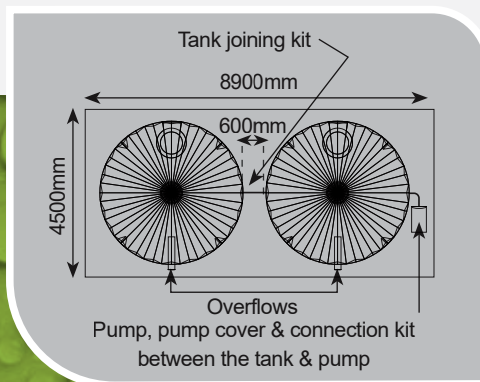
If you're not on town water or sewage you need this water & septic package

Includes:

- 2 x 27000L tanks giving you 54,000L of storage capacity
- 1 x Tank joining kit
- Quick connection kit between your tank & pump
- A pump cover to protect your pump
- A pump large enough to run your whole house including kitchen, toilets, laundry & bathrooms (100L/m)
- A 3000L septic tank with partition



BTPACK



Tank Joining Kit



Matching Pump Cover



Quick Connection Kit



100L/m Pump



3000L Septic Tank

OFF MAINS PACKAGE SINGLE

Enjoy purified water with this GOOD & SAFE package. 45,000L of water supply with a large pump to run your whole house and a single water filter system providing peace-of-mind throughout the house. Reducing taste, odour, chemicals & sediment in your water. The system protects and prolongs the life of appliances throughout your home.

Includes:

- 2 x 22,500L rainwater tanks
- A tank joining kit, so your tanks fill together
- 90mm Overflow with each tank
- Single water filter system with dual-purpose filter
- Quick connection kit between your tank & pump
- 100L/m Pump
- Matching pump cover to protect your pump
- A tank dial guage level indicator
- 2 Outlets on each tank
- Stainless steel strainer & dust cover to prevent algae



OMSPACK



Single Filter



Tank Joining Kit



100L/m Pump



Matching Pump Cover



Quick Connection Kit



Water Level Indicator

Shed Package

Ideal for workshop sheds, garages & carports, garden sheds or granny flats

Make the most of the water you catch from your shed. If you're buying a new shed or you've already got a shed but don't have a tank on it, then this is the package you need. To be able to use the water you're going to need a pump, so get the whole job done now by buying in a package so you can save more, don't have to go shopping around, and get it all delivered to your property in one go.

Includes:

- 1 x Rainwater tank (your choice of tank size)
- 90mm Overflow kit
- Quick connection kit: tank to pump
- 50L/m pump
- Matching pump cover
- 2 Outlets
- Strainer & strainer cover

SGPACK



Overflow



Strainer



Matching Pump Cover



50L/m Pump



Quick Connection Kit



2 Outlets



Car & Boat Washing Package

Hook up a tank to your house or shed to catch rainwater to wash your car or boat. Using rainwater is by far the best option to wash your car giving you a better finish and you don't even have to chamois it down afterwards. Pump has enough pressure to wash your car or boat.

Includes:

- 14,000L Rainwater tank
- 90mm Overflow kit
- Quick connection kit: tank to pump
- 100L/m pump
- Matching pump cover
- 2 Outlets
- Strainer & strainer cover

CBPACK



Overflow



Strainer



Matching Pump Cover



50L/m Pump



Quick Connection Kit



2 Outlets



WATER STORAGE ACCESSORIES

- 💧 Pump Covers
- 💧 Level Indicators
- 💧 Water Filters
- 💧 Fittings
- 💧 Strainers & Dust Covers



TANK STRAINERS & STRAINER COVERS

Features:

- Covers with moulded “knock-outs” which can be removed as required
- Flexible & UV stabilised to withstand the elements
- Mosquito proof stainless steel mesh



NO MORE ALGAE
UV Blocker lid prevents algae growth by stopping sunlight.



CODE	DESCRIPTION	A = STRAINER DIAMETER	B = RECOMMENDED DIAMETER
RTS001	Large Strainer	410	365
RTS002	Medium Strainer	320	280
RTS005	Extra Large Strainer 500mm	500	460
RTSDC1	Strainer Cover for RTS001		
RTSDC2	Strainer Cover for RTS002		
RTSDC5	Strainer Cover for RTS005		

RAINWATER TANK LIDS



EASY ACCESS
Ideal for industrial applications - for easy filling via tank top & checking content levels.

CODE	DESCRIPTION
RTA40	455mm hinged lid and rim
RTA41	350mm screw lid and rim
RTA42	255mm screw lid and rim

OVERFLOW KIT HIGH LEVEL



RAPIDSEALS

Features:

- Enable a watertight connection through tank walls
- Provide a quick and easy solution - suitable for use as overflows & tank connection system
- Can be fitted through corrugations as well as slight curves in tank walls - does not need a completely flat surface

CODE	DESCRIPTION
RS90	Rapidseal for 90mm PVC Pipe
RS100	Rapidseal for 100mm PVC Pipe
RS90K	90mm Overflow Kit

DOWNPIPE DIVERTERS

Features:

- Automatic operation
- 90mm suitable to use with small or slimline rainwater tanks
- Amount of water diverted can be customised according to the surface area of your roof
- These kits contain all the components required to convert your downpipe to a first flush diverter (excluding pipe)

CODE	DESCRIPTION
RT90PVC	90mm PVC Downpipe Diverter Kit
RT100PVC	100mm PVC Downpipe Diverter Kit



OVERFLOW SCREENS

OVERFLOW SCREEN FOR 90mm PVC PIPE



HIGH FLOW VENTED FLAP VALVE FOR 90mm PVC PIPE



NO MORE BUGS
Fit overflow to prevent access by frogs, mosquito or insects

TANK FITTINGS

	CODE	DESCRIPTION
METAL TANK OUTLETS	RTA34	1" brass tank fitting with 3/4" internal thread
	RTA36	1 1/2" brass tank fitting with 1 1/2" internal thread
	RTA37	2" brass tank fitting with 1 1/2" internal thread
	RTA37SS	2" stainless steel tank fitting with 1 1/2" internal thread
	RTA38	3" brass tank fitting
	RTA39	4" brass tank fitting
PLASTIC TANK OUTLETS	RTA54	1" Ny-glass outlet with corrugated gasket set
	RTA52	1 1/2" Ny-glass outlet with corrugated gasket set
	RTA50	2" Ny-glass outlet with corrugated gasket set
	RTA55	1" Ny-glass outlet with 1" male & female threads
	RTA51PP	2" Polypropylene tank fitting with 2" male & female threads
	RTA51LH	2" Ny-glass outlet with left hand thread
	RTA58LH	3" Ny-glass outlet with left hand thread
RTA59LH	4" Ny-glass outlet with left hand thread	
BALL VALVES AND POLY NIPPLES	BVT25	Ball Valve Tap 1" female/female
	BVT38	Ball Valve Tap 1 1/2" female/female
	BVT38MF	Ball Valve Tap 1 1/2" male/female
	BVT50	Ball Valve Tap 2" female/female
	BVT75	Ball Valve Tap 3" female/female
	BVT100	Ball Valve Tap 4" female/female
	RTA95	1" male/male nipple
	RTA96	1 1/2" male/male nipple
	RTA97	1 1/2" to 2" male/male nipple
	TAP19	3/4" Ball Valve Garden Tap with Lever Handle
	TAP25	1" Ball Valve Garden Tap with Lever Handle



RISER PIPE KIT

Features:

- Supplied with a 300mm riser as standard, other lengths available by request
- Supplied fitted if ordered with a tank (specify required position)

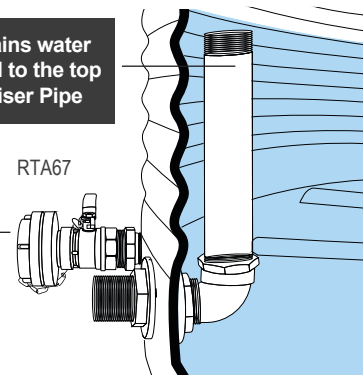
This item is a requirement in some areas where a specified amount of water must always remain in the tank for fire fighting purposes. The household water requirement is taken from the riser pipe outlet so that the lower amount of water is always available through the Storz outlet only (Storz kit available separately - RTA67 pictured).

CODE	DESCRIPTION
RTA68	Riser Pipe Kit 50 x 300mm



Retains water level to the top of Riser Pipe

65mm quick connection Storz Fitting for fire fighting hose



BUSHFIRE?

Do you live in a bushfire danger zone? Install a Riser Pipe Kit - this guarantees to keep a specified quantity of water in the bottom of your tank for an emergency!



STORZ FITTINGS

CODE	DESCRIPTION
RTA60	38mm Storz fitting with 1 1/2" male thread
RTA61	38mm Storz cap
RTA62	65mm Storz fitting with 2" male thread
RTA63	65mm Storz cap
RTA66	38mm Storz Kit for connection to 1 1/2" female outlet
RTA67	65mm Storz Kit for connection to 1 1/2" female outlet



PUMP COVERS

Features:

- Full protection for your pump from the weather
- Fully ventilated - will not cause overheating
- Will fit over any pump not exceeding these dimensions:
- RTSPC1 - 550mm (L) x 280mm (W) x 400mm (H)
- RTSPC2 - 480mm (L) x 480mm (W) x 630mm (H)

CODE	DESCRIPTION	L x W x H (mm)
RTSPC1	Small Smooth Pump cover	700 x 400 x 540
RTSPC2	Large Smooth Pump cover	600 x 600 x 800



DIAL GAUGE LEVEL INDICATOR

Features:

- Seals directly to the tank
- Utilises a reliable float system
- Easy to read dial face with adjustable empty & full indicators

Suitable for:

- Small rainwater tanks, close-up viewing

i SIMPLE TO INSTALL
No batteries or wiring required



WATER BEACON RTLWB

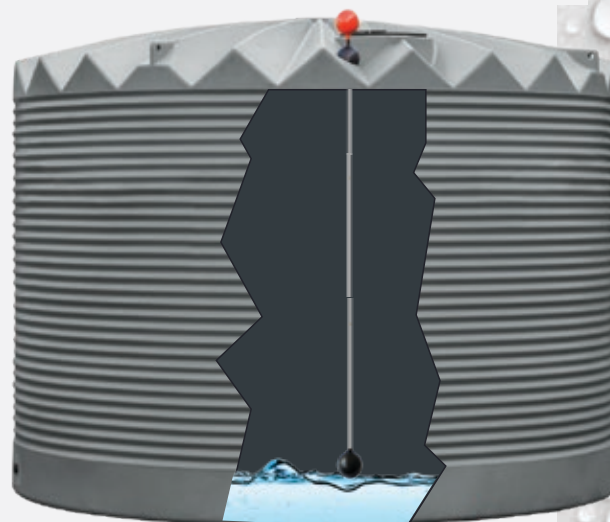
Features:

- Large Hi-Vis orange ball for long distance tank checking (140mm ball)
- Adaptable mounting base to suit almost any water tank roof angle (max. 45° angle)
- 3 piece sturdy 19mm aluminium rise tube (2050mm)
- Livestock proof, top mounting (out of reach from livestock)
- Insect proof, unique domed cover keeps insects from your water
- Tough & sturdy, able to withstand blustery, windy conditions

Suitable for:

- Long distance tank checking, farm / industrial application

Scan here for more information



WATER FILTERS

Scan here for more information



Single Stage

INLINE SINGLE FILTER FINE 110LPM (EM1 SERIES)

Width: 185mm
Height: 700mm
Depth: 200mm



RTFL01

Dual Stage

INLINE DUAL FILTER FINE 5MICRON 60LPM (EM2 SERIES)

Width: 390mm
Height: 730mm
Depth: 200mm



RTFL02

Triple Stage

INLINE TRIPLE FILTER INC. UV TREAT 130LPM (HYBRID SERIES)

Width: 670mm
Height: 760mm
Depth: 211mm



RTFL03

i GREAT TASTING WATER
Connect to your water supply for dirt, rust, sediment & odour free water

STORAGE TANKS

- 💧 Liquid Fertiliser Storage Tanks
- 💧 Molasses Storage Tanks
- 💧 Septic Tank

“Rapid Plas offers a range of Liquid Fertiliser Tanks and Molasses Tanks rated to 1.5SG liquids (Specific Gravity). This makes them much stronger than a standard rainwater tank therefore able to hold these heavier liquids.

We also offer fully drainable storage tanks suited for use at fertiliser and chemical manufacturers and distributors, potable and waste water treatment plants and virtually any other liquid processing applications.”



FERTILISER STORAGE TANKS

Features:

- Rated for 1.5SG liquids
- Safe & reliable storage of your valuable fertiliser
- Liquidator kit accurately shows level of contents
- Industry standard 2" Banjo valves for easy filling
- Available with 3" fertiliser kit upon request

CODE	DESCRIPTION
RTFK	Fertiliser kit only
FTFK-UPSIZE3	Upsize to 3"



22,500L CORRUGATED STORAGE TANK WITH FERTILISER KIT (5,000 GAL)

RT22500FK



Dia: 3510mm
Inlet Height: 2390mm
Height: 2750mm
Outlet Size: 1½"
Strainer: 500mm

25,000L CORRUGATED STORAGE TANK WITH FERTILISER KIT (5,500 GAL)

DP688



Dia: 3600mm
Inlet Height: 2860mm
Height: 3190mm
Outlet Size: 2"
Strainer: 500mm

MOLASSES STORAGE TANKS

Features:

- Extra heavy tanks with thicker walls suitable for molasses storage
- Free delivery to site within our delivery area
- Available in any colour from our range (see page 4)
- Hinged and vented lid
- Manhole access
- 3" brass outlet supplied as standard
- Rated for 1.5SG liquids

Options:

- Upgrade to larger Brass Outlets
- Ball Valve Tap available

CODE	STYLE	CAPACITY		DIAMETER mm	OVERALL HEIGHT mm
		LITRES	GALLONS		
RT09000M	Corrugated	9000	1980	2350	2430
RT10500M	Corrugated	10000	2200	2520	2450
RT13500M	Corrugated	14000	3080	3000	2420
RT22500M	Corrugated	22500	5000	3510	2750
RT22500LPM	Corrugated	22500	5000	3840	2440
RT27000M	Corrugated	27000	6000	3830	2700
DP620	Smooth Sided	25000	5400	3500	3190
FT32000M	Smooth Sided	32000	7040	3990	3230



22,500 LITRE

RT22500M



32,000 LITRE

FT32000M



Supplied & fitted as standard.



Hinged lid with manhole access for easy filling or checking of contents.

SEPTIC / UNDERGROUND TANK

Features:

- Made to Australian Standard (AS/NZS1546.1)
- Lightweight yet extremely strong and durable
- 15 year manufacturer's guarantee

Weighing under 150kg, the tank can be easily positioned and installed by a plumber or drainer without requiring mechanical lifting equipment.



3000L UNDERGROUND SEPTIC TANK WITH PARTITION

UST3000P

Top Dia: 1880mm
Height: 1875mm
Weight: 137kg

PIPELINE TANKS

Features:

- The ideal tank for livestock watering – keep your plumbing protected from your stock!
- This tank with its attractive concealed plumbing is especially designed to be connected to pipelines to supply water to your stock troughs.
- High-quality fittings supplied: “Twist & Flip” easy access cover, 2” float valve & plumbing.

Options:

- Available with the RTC13500, RTC22500, DP619 & RTC27000.
- Dual action float valve available.
- Optional extra 2” outlet DP619

CODE	STYLE	CAPACITY		DIAMETER mm	OVERALL HEIGHT mm
		LITRES	GALLONS		
RTIPK13500	Corrugated	14000	3080	3000	2420
RTIPK22500	Corrugated	22500	5000	3510	2750
RTIPK25000	Smooth Sided	25000	5400	3600	3190
RTIPK27000	Corrugated	27000	6000	3840	2700

INTERNAL PLUMBING KIT FOR 25,000L SMOOTH SIDED TANK

RTIPK25000 (for DP619)



EASY FILL SYSTEM with 2” internal riser & float:

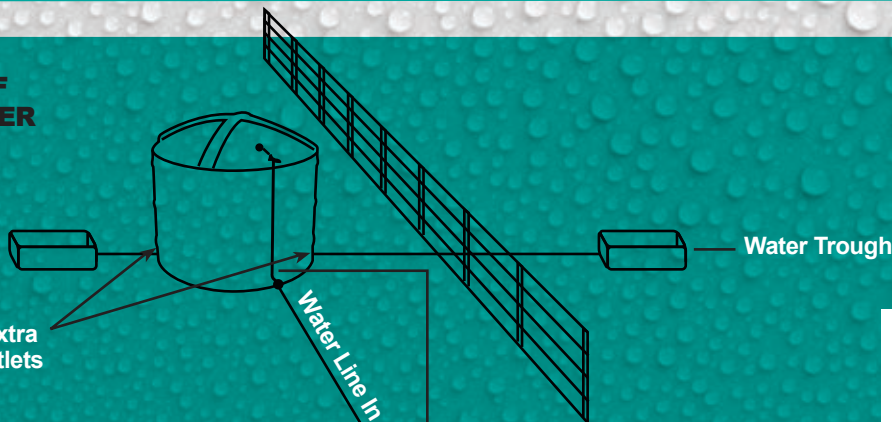
- 2” Float Valve
- Poly Riser
- 2” Brass Inlet

INTERNAL PLUMBING KIT FOR 14,000L TANK

RTIPK13500



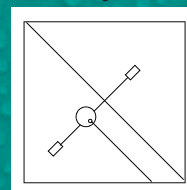
EXAMPLE DIAGRAM OF TANK PROVIDING WATER TO TWO TROUGH:



Example showing optional extra outlet for DP619 ie. 2 x 2” outlets to connect to 2 troughs.

Pre-plumbed tank with top filling float valve. Connect to the 2” brass inlet at the bottom. This keeps your plumbing protected from livestock and the sun.

Birds Eye View



COMMERCIAL & INDUSTRIAL STORAGE

Fully Drainable Tanks & Customised Fittings

“No matter what your industrial manufacturing process is from food production, to mechanical processing, to waste control, it is important that you have the right equipment for the right applications. Rapid Plas has innovative poly products that can allow you to create greater flexibility and reduced costs through a range of benefits. Lightweight, portable, re-usable, easy to wash and easy to drain are benefits that can be experienced with Rapid Plas products, depending on your application.”



CONE BOTTOM TANK



USE EVERY LAST DROP

Unique design enables all contents to be drained

Features:

- 15° cone bottom and full drain bung for total evacuation of contents
- Ribbed side wall tanks for superior strength
- Self supporting roof with no internal fixtures or supports
- 2" complete draining Banjo fitting installed onto all tanks (Optional 3" available)
- 3 positive tie down points / lifting lugs
- Heavy duty galvanised steel frame
- Supplied in translucent green colour so level of contents can be seen (Also available in black)
- 450mm hinged & vented lid
- Rated for 1.5 SG liquids



FTS13500

FTS07000



BJBD-UPSIZE3



BJT50



BJT75FP

CODE	DESCRIPTION	CAPACITY	SIZE (mm)
FTS07000	Cone Bottom Tank on Stand	7000L (1540 Gal)	2500 dia x 2280 h
FTS13500	Cone Bottom Tank on Stand	13600L (3000 Gal)	2500 dia x 3700 h
FTS15000	Cone Bottom Tank on Stand	15000L (3300 Gal)	2500 dia x 3970 h
BJBD-UPSIZE3	3" Complete Drain Fitting		
BJT50	50mm (2") Banjo Valve with Male Camlock		
BJT75FP	75mm (3") Full Port Banjo Valve		

Cone bottom tanks supplied standard with 2" full drain fitting.



NB: The bottom outlet is the only fitting supplied as standard. Please order additional fittings as required.

Custom Solutions:

Let us create a solution for you!

We offer a complete range of customisable fittings and accessories to go with your tank. PE Stub flanges with Table D, E or ANSI 150 backing rings (galvanised or stainless steel) can be welded into tanks. Stainless steel fittings and sprayballs for tank clean out can also be supplied to order, please call us to discuss your needs.



Flange fittings with butterfly valve



Cone bottom tanks with stainless steel fittings

Fittings & Accessories:



Poly flange fittings

Stainless steel piped outlets



Tri-Clover fitting



Stainless steel sprayballs

RTSPRAYBALL63



Stainless steel fittings

INDUSTRIAL TANK

Features:

- Designed specifically for the industrial environment
- Engineer verified design
- Totally self supporting roof - no internal fixtures or supports
- 4 inbuilt lifting lugs
- 500mm Inlet strainer or 600mm manhole with hinged lid
- 3 x overflow / vertical inlet / outlet locations - can take up to 150mm fitting(s)
- 2 x horizontal pipe fitting areas on the roof at 1 & 7 O'clock
- Suitable for a wide range of liquid chemicals
- Available for 1 and 1.5 SG

32,000L (7,040 GAL) INDUSTRIAL TANK

FT32000



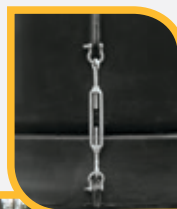
Dia: 3990mm
 Inlet Height: 2730mm
 Height: 3230mm
 Outlet Size: 2" (with 1½" internal thread)

UNIVERSAL RAPID DRAIN TANK

The 100% poly self-draining tank that has universal applications – compact, portable and easy to use.

Features:

- Multi-purpose – can be cleaned and re-used for a variety of liquids (e.g. molasses or liquid fertiliser)
- 5° cone bottom and drain fitting for virtually 100% evacuation of contents & quick clean out
- NEW improved base for added stability - features a 2.5m Circular Stabilisation Pod to provide a much larger surface area than support legs
- Water-fillable base weighing 570kg when filled to stabilise tank when the tank is empty
- Side delivery – NO vortex created, to prevent pump sucking air
- Self supporting roof with no internal fixtures or supports
- 3 x lifting lugs / tie-down points on roof
- Easy access 2" outlet and ball valve on the side, not underneath the tank. Other outlet sizes available
- Safe filling from ground level
- 100% polyethylene construction tank and base makes it a long term solution – will not rust or corrode
- Supplied in black colour as standard (Also available in translucent green colour so level of contents can be seen)
- Store at application site and free up your truck for other use
- 450mm Hinged and vented lid
- Rated for 1.5 SG liquids
- 2 tanks will store a full B-Double load
- 2500mm diameter (can be transported without the need of an escort)



16000L UNIVERSAL RAPID DRAIN TANK & BASE

FTP16000

Dia: 2500mm
 Height: 3910mm



2 TANKS WILL STORE A FULL B-DOUBLE LOAD



LIVESTOCK WATERING & FEEDING

Round & Long Troughs Tank & Trough Combos

Many of our dealers stock Pro Tubs and Longline Water & Feed Troughs for you to pick up today. A dealer near you may have the trough you are looking for in stock.



Livestock Watering

SWEEP TROUGH

Stock Type:

Cattle, Horses, Alpacas, Sheep, Goats

Features:

- All poly extra heavy duty water trough
- Includes 1" float valve - fully protected
- Easy to clean out, with smooth sweep out end
- Double walled, fully supported trough
- Easy to move around to different paddocks
- Sweep out feature prevents algae build up



PT70SW

140L 8' SWEEP OUT TROUGH

Length: 2500mm
Width: 550mm
Height: 475mm
Float Valve: 1"

SWEEP TROUGH BROOM

Length: 1600mm
Width: 370mm



PTSWB1



TROUGH CLEANING MADE EASY

Use the Sweep Trough Broom to simply sweep debris out the smooth tapered end of the trough - easy as!

ULTRA LONGLINE WATER TROUGHS

Stock Type:

Cattle, Horses, Alpacas, Sheep, Goats

Features:

- One piece trough with fully protected 1" float system
- 2" Drain bung at either end
- Raised cover allows trough to fill to the brim
- All poly, heavy duty, UV stabilised to withstand tough Australian conditions



WATER TWO PADDOCKS WITH ONE TROUGH

Centre mounted float - can service either side of a fence with one Inlet.



PT64W

200L 4' ULTRA LONGLINE WATER TROUGH

Length: 1300mm
Width: 600mm
Height: 480mm
Float: 1"



PT68W

400L 8' ULTRA LONGLINE WATER TROUGH

Length: 2390mm
Width: 600mm
Height: 480mm
Float: 1"

ROUND WATER TROUGH

Stock Type:

Cattle, Horses, Alpacas

Features:

- Tough and durable with a long history of use on farms
- Light and easy to move around - excellent for drovers
- Smooth finish with 2" drain bung for easy cleaning

Options:

- Available with or without float valve cover



PTT11W

1000L ROUND WATER TROUGH

Dia: 1650mm
Height: 600mm



PTT10W

500L ROUND WATER TROUGH

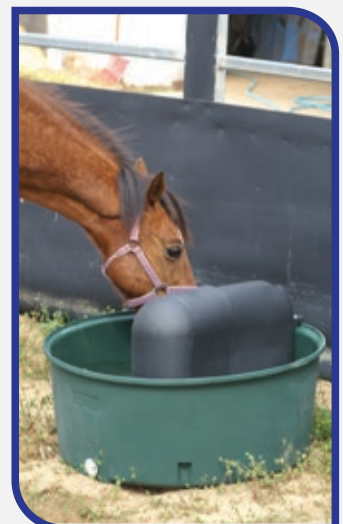
Dia: 1300mm
Height: 500mm



PTT12W

250L ROUND WATER TROUGH

Dia: 1000mm
Height: 420mm



Livestock Watering

PRO TUB TROUGHS

Stock Type:

Cattle, Horses, Alpacas

Features:

- Linch pin secures float cover to prevent damage
- Float enclosure moulded as part of the trough
- Raised float allows trough to fill completely
- All pipework protected by trough surround
- 2" drain bung for easy cleaning
- Fitted with 1" high pressure, high flow valve

Options:

- Add '-MAX' to the product code when ordering to replace standard float valve with high flow MAXFLOW valve option. EG. PTTU40W-MAX

CODE	DESCRIPTION
PTFC25U	1" float valve and cover for Pro Tub Trough
PTF25S	1" float valve complete for Pro Tub Trough
PTA65	Float cover only for Pro Tub Trough
PTA71S	1" valve only for Pro Tub Trough (no float)
PTA77	Float ball only (no valve or arm) for PTA71S
PTA83C	2" drain bung - coarse thread
PTA99	Replacement cap and gasket for PTF25 / PTF25S



PTTU44W
1200L PRO TUB WATER TROUGH
Dia: 1930mm
Height: 670mm



PTTU42W
600L PRO TUB WATER TROUGH
Dia: 1500mm
Height: 590mm



PTTU40W
220L PRO TUB WATER TROUGH
Dia: 1110mm
Height: 460mm

M SERIES TROUGHS

Stock Type:

Alpacas, Sheep, Goats, Poultry

Features:

- The perfect height for small animals
- Easily transportable
- Strong all-poly construction suitable for corrosive environments
- Smooth finish facilitates cleaning
- Covered float prevents stock damage
- Peg down points to prevent livestock pushing the trough around

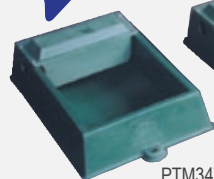


Spare Parts

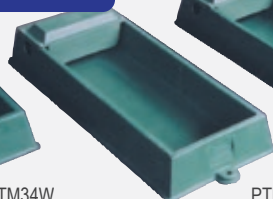
CODE	DESCRIPTION
PTA63	Float cover only
PTA70	1/2" float valve only with arm
PTA76	Float-ball only, for PTA70
PTFC12M	1/2" float and cover
PTF25S	1" Poly Float Valve Complete for Pro Tub
PTF25 MAXFLO	25mm Max-Flo float valve (diaphragm type)
PTA83C	2" Drain bung coarse thread



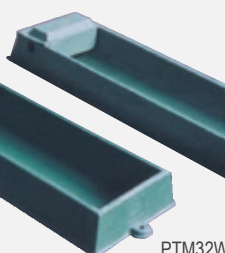
LIGHTWEIGHT
Design makes it easy to handle and relocate



PTM34W
35L M SERIES WATER TROUGH
Length: 840mm
Width: 570mm
Height: 180mm



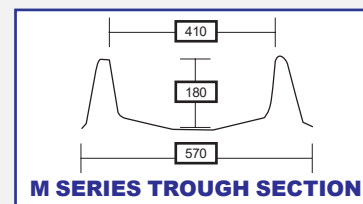
PTM33W
60L M SERIES WATER TROUGH
Length: 1280mm
Width: 570mm
Height: 180mm



PTM32W
100L M SERIES WATER TROUGH
Length: 1900mm
Width: 570mm
Height: 180mm



PTM31W
140L M SERIES WATER TROUGH
Length: 2400mm
Width: 570mm
Height: 180mm



Livestock Watering

LONGLINE WATER TROUGHS

Stock Type:

Cattle, Horses



COMPLETE UNIT
Troughs come complete with float & protective cover.



Features:

- Smooth interior with a 2" drain bung for easy cleaning
- Peg down points at each end
- Water troughs come complete with a float & float cover which gives the float full protection

Options:

- Available as either feed or water troughs
- Add- -MAX' to the product code when ordering to replace standard float valve with the high flow MAXFLOW valve option. EG. PTL2W-MAX



PTL8W
190L 8' LONGLINE WATER TROUGH

Length: 2400mm
Width: 550mm
Height: 360mm

PTL6W
145L 6' LONGLINE WATER TROUGH

Length: 1840mm
Width: 550mm
Height: 360mm

PTL4W
98L 4' LONGLINE WATER TROUGH

Length: 1270mm
Width: 550mm
Height: 360mm

PTL2W
50L 2' LONGLINE WATER TROUGH

Length: 640mm
Width: 550mm
Height: 360mm

Spare Parts:

PTF12

- ½" high pressure float valve suitable for mains pressure 100PSI
- Flow rate 20L per minute at 15PSI to 50L per minute at 100PSI

PTF25

- Full flow through valve gives high flow rates
- Also suitable for high pressure up to 150 psi
- Long arm ensures closure at high pressure
- Flow rate 60 litres per min at 15 psi to 130 litres per min at 45 psi

CODE	DESCRIPTION
PTFC12L	½" float valve and cover for longline trough
PTF12	½" float valve complete for longline trough
PTFC25L	1" float valve and cover for longline trough
PTF25	1" float valve complete for longline trough
PTA61	Float cover only for ½" valve
PTA62	Float cover only for 1" valve
PTA70	½" float valve only (excludes float ball)
PTA71S	1" float valve only (excludes float ball)
PTA76	Float ball only (excludes valve & arm) for PTA70
PTA77	Float ball only (excludes valve & arm) for PTA71
PTA84	2" drain cap for longline trough

TROUGH INSERTS

Features:

- Durable UV stabilised polyethylene for long outdoor life
- Rust free polyethylene will not corrode
- Smooth finish & 2" drain bung facilitates cleaning
- Great for use in existing or custom design solutions

CODE	DESCRIPTION	CAPACITY (LITRES)	DIMENSIONS L x W x H (mm)
PTI02	2' Insert	50	630 x 520 x 270
PTI04	4' Insert	98	1240 x 520 x 270
PTI06	6' Insert	145	1840 x 520 x 270
PTI08	8' Insert	190	2400 x 520 x 270



STOP THE BULLY

Longer lengths enable the whole herd to access the trough at once, so nobody misses out!

Livestock Watering

THE TOUGH TROUGH

Stock Type:

Cattle, Horses, Alpacas, Sheep, Goats

Features:

- Easier to handle - throw it on the back of a ute by yourself
- Cost effective - compared to concrete
- 2" Drain bung
- Pipe work & float valve area fully protected

Options:

- 1" or 2" valve available; can accommodate 9" float for larger valves



PTTS82W

650L TOUGH TROUGH

Diameter: 1650mm
Height: 450mm

TANK & TROUGH COMBO

Stock Type:

Cattle, Sheep, Goats

Features:

- Provides long term water security. If in the event the water supply is cut off before the combo, you still have a large body of water right at the trough. This is a great solution if you cannot check your water supply regularly
- The easiest trough to clean with its sweep out ramp, and cleaner water means better stock
- Ready-to-go. It's all done for you. No tricky installation between the tank and the trough. Just hook up at the bottom and it's right to go
- The internal plumbing prevents stock damage
- Cooler and cleaner water than traditional methods, inhibiting algae growth and is better for your stock
- Decreases the risk of stock drowning in their water supply
- Circular trough design to facilitate water flow & maximise stock watering capacity
- 2" drain bung for improved cleaning

CODE	DESCRIPTION
DP608	Level Indicator
DP6EFVK	Extra Float Valve Kit
PTF50DA	50mm Dual Action Float Valve
PTF32DA	32mm Dual Action Float Valve

Scan here to watch



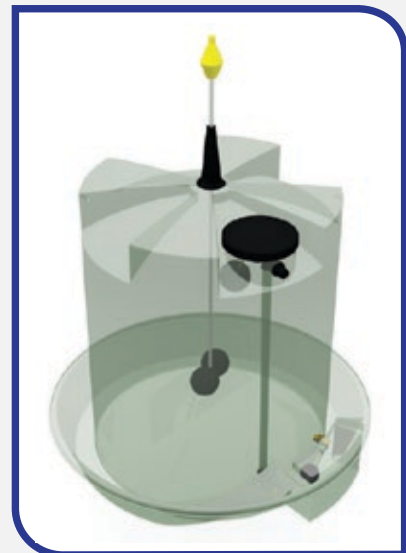
PTSWB2
SWEEP OUT BROOM



DP645
5,000L TANK & TROUGH COMBO WITH LEVEL INDICATOR
Trough Dia: 2500mm
Trough Height: 280mm
Tank Height: 2200mm



DP640
10,000L TANK & TROUGH COMBO WITH LEVEL INDICATOR
Trough Dia: 3240mm
Trough Height: 300mm
Tank Height: 2380mm



Livestock Watering

Better Value - Tank & Trough Packs

By buying in a package you save a lot more, plus get everything delivered to your property for free* in one go.

NOTE: Must be delivered direct to farm as one complete package.* Standard freight terms apply.

CATTLE-PRO-PLUS PACK

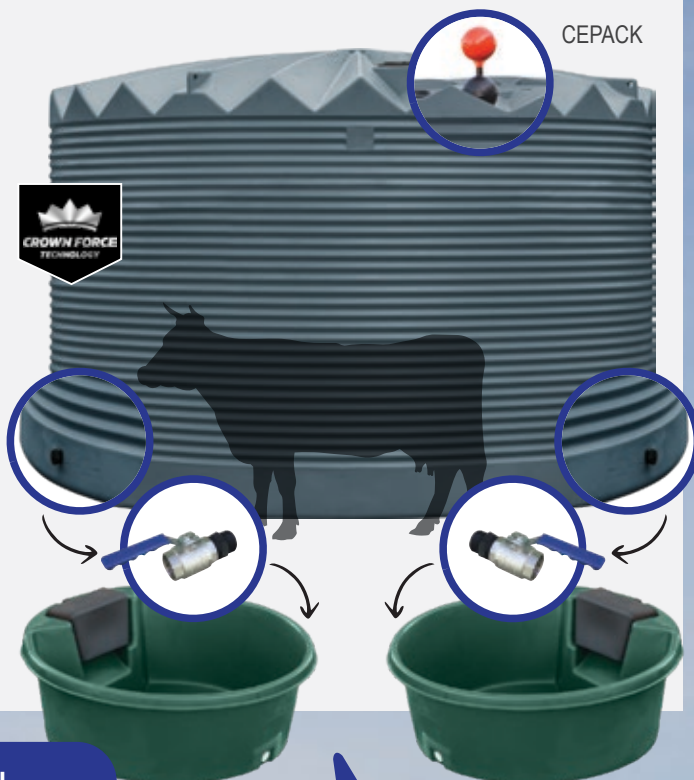
Includes:

- 27000L tank
- 2 x 1½" outlets to feed out to both troughs
- 2 x 600L Pro Tub Troughs including float valves & covers
- A Water Beacon level indicator to check quickly that your stock have enough water
- 2 x ball valves to go out to both troughs

CATTLE-PRO PACK

Includes:

- 14000L tank
- 2 x 1½" outlets to feed out to both troughs
- 2 x 220L Pro Tub Troughs including float valves & covers
- A Water Beacon level indicator to check quickly that your stock have enough water
- 2 x ball valves to go out to both troughs



If your tank and trough capacity is too small you will need to pump more often. Increasing your electricity & maintenance costs significantly.

REMEMBER...The water consumption rates for livestock vary.

DAILY WATERING GUIDE (approx.)

Cattle: 70L Daily Sheep: 7L Daily



A MUCH BETTER WAY TO BUY.

Get the complete package with extra capacity, a 6000 gallon tank.

SHEEP-PRO-PLUS PACK

Includes:

- 14000L tank
- 2 x 1½" outlets to feed out to both troughs
- 2 x 200L Ultra Longline double paddock water troughs including float valves & covers
- A Water Beacon level indicator to check quickly that your stock have enough water
- 2 x ball valves to go out to both troughs

SHEEP-PRO PACK

Includes:

- 9000L tank
- 2 x 1½" outlets to feed out to both troughs
- 2 x 200L Ultra Longline double paddock water troughs including float valves & covers
- A Water Beacon level indicator to check quickly that your stock have enough water
- 2 x ball valves to go out to both troughs



Livestock Feeding

ROUND FEED TUB

Stock Type:

Cattle, Horses, Alpacas

Features:

- Tough and durable with a long history of use on farms
- Light and easy to move around - excellent for drovers
- Smooth finish with 2" drain bung for easy cleaning



PTTLD10

LID FOR 500L ROUND FEED TUB



PTT10WB

500L ROUND FEED TUB

Dia: 1300mm
Height: 500mm



PTT12WB

250L ROUND FEED TUB

Dia: 1000mm
Height: 420mm

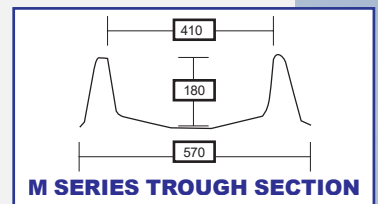
M SERIES FEED TROUGHS

Stock Type:

Alpacas, Sheep, Goats, Poultry

Features:

- The perfect height for small animals
- Easily transportable
- Strong all-poly construction suitable for corrosive environments
- Smooth finish facilitates cleaning
- Peg down points to prevent livestock pushing the trough around



EXTRA STABILITY

Peg down with tent pegs to provide your trough extra stability and stop larger animals pushing it around.



PTM34F

35L M SERIES FEED TROUGH

Length: 840mm
Width: 570mm
Height: 180mm

PTM33F

60L M SERIES FEED TROUGH

Length: 1280mm
Width: 570mm
Height: 180mm

PTM32F

100L M SERIES FEED TROUGH

Length: 1900mm
Width: 570mm
Height: 180mm

PTM31F

140L M SERIES FEED TROUGH

Length: 2400mm
Width: 570mm
Height: 180mm

SHEEP TUB FEEDER

Stock Type:

Sheep

Options:

- Optional floating licks to control intake

Features:

- Cost effective solution for supplement feeding sheep
- Large 130Ltr capacity - feeds approx. 400 head of sheep
- Extremely tough poly tub - UV stabilised
- Easily moved and can be used to encourage sheep to graze out, meaning better paddock utilisation



EASY ON THE WALLET

And easy to use! Cost effectively feed up to 400 head!



DP504

SHEEP TUB FEEDER

Length: 2360mm
Width: 440mm
Height: 160mm

DP518

SHEEP TUB FEEDER WITH 8 FLOATING LICKS

Length: 2360mm
Width: 440mm
Height: 160mm

Livestock Feeding

LONGLINE FEED TROUGHS

Stock Type:

Cattle, Horses

Features:

- Smooth interior with a 2" drain bung for easy cleaning
- Peg down points at each end
- Water troughs come complete with a float & float cover which gives the float full protection

Options:

- Available as either feed or water troughs
- Add -MAX' to the product code when ordering to replace standard float valve with the high flow MAXFLOW valve option. EG. PTL2W-MAX



PTL8F

190L 8' LONGLINE FEED TROUGH

Length: 2400mm
Width: 550mm
Height: 360mm

PTL6F

145L 6' LONGLINE FEED TROUGH

Length: 1840mm
Width: 550mm
Height: 360mm

PTL4F

98L 4' LONGLINE FEED TROUGH

Length: 1270mm
Width: 550mm
Height: 360mm

PTL2F

50L 2' LONGLINE FEED TROUGH

Length: 640mm
Width: 550mm
Height: 360mm



EXTRA STABILITY

Peg down with a star post for extra stability - prevent stock injury & food wastage.

Scan here to watch



STOP THE BULLY

Longer lengths enable the whole herd to access the trough at once, so nobody misses out!

Spare Parts:

TROUGH INSERTS

Features:

- Durable UV stabilised polyethylene for long outdoor life
- Rust free polyethylene will not corrode
- Smooth finish & 2" drain bung facilitates cleaning
- Great for use in existing or custom design solutions



CODE	DESCRIPTION	CAPACITY (LITRES)	DIMENSIONS L x W x H (mm)
PTI02	2' Insert	50	630 x 520 x 270
PTI04	4' Insert	98	1240 x 520 x 270
PTI06	6' Insert	145	1840 x 520 x 270
PTI08	8' Insert	190	2400 x 520 x 270



Livestock Feeding

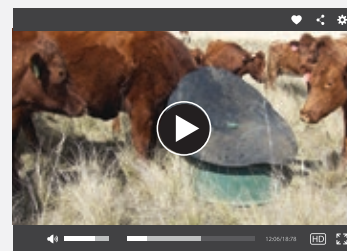
MINERAL FEEDER

Stock Type: Cattle

Features:

- Flexible rubber lid which cattle lift up to access feed
- Easy access for large numbers of cattle
- Durable & rust free
- Stackable for easy storage (with rubber removed)
- Ideal for fast weight gain

Scan here to watch



120L PTMF120
MINERAL FEEDER
Dia: 1100mm
Height: 530mm

250L PTMF250
MINERAL FEEDER
Dia: 1450mm
Height: 650mm



PROTECTED 24/7

Don't risk urea poisoning! This design gives your feed weatherproof protection, and is accessible to stock around the clock.

COVERED MINERAL FEEDER

Stock Type: Cattle

Features:

- Large 500L capacity
- Durable roof with substantial overhang to protect feed from the elements
- Raised tub for extra feed protection
- Innovative lid design for easy filling & prevent injury & back strain. Removes the danger of the lid falling when refilling the tub
- Lid can be assembled to open to the left or the right
- Lid can be latched securely in the closed position to prevent stock opening it
- Patented Design



NO-LIFT

Swivel roof design means no lifting required to fill tub.



500L MINERAL FEEDER WITH ROTATING POLY LID

Dia: 2400mm
Height: 1900mm



NB: SOME ASSEMBLY MAY BE REQUIRED

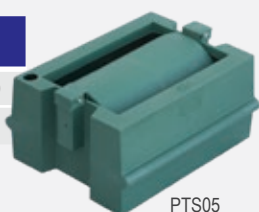
MOLASSES LICKER DRUM

Stock Type: Cattle

Features:

- Proven method of supplementary feeding using molasses, water and urea mixes
- Bloat oil or other liquid supplements may be added
- Will supply 20–30 cattle for approximately 4 days
- All poly construction for corrosion resistance
- Floating roller for effective use of supplement
- No metal bearings to rust or seize
- Easy fill hole on the side
- Must have molasses mixed with 50% water

CODE	CAPACITY (LITRES)	DIMENSIONS L × W × H (mm)
PTS05	120	880 × 700 × 420
PTS05D	-	Drum only



LICKER WHEEL FEEDER

Stock Type: Cattle

Features:

- Large 500L capacity for large stock numbers, save valuable time refilling
- Available with 4 lick wheels
- Unique weatherproof design protects supplement from the elements
- Controls feed intake
- Easy access fill point with cap
- Portable – move it from paddock to paddock for easy feeding

500L LICKER WHEEL FEEDER

Dia: 1320mm
Wheels: 4
Wheel Dia: 560mm



Livestock Feeding

MILK FEEDING



PCMB1
1 TEAT MILK BOTTLE WITH MILK MAID CALF TEAT
Capacity: 2 Litres



PCMB1F
1 TEAT MILK BOTTLE WITH PEACH CALF TEAT
Capacity: 2 Litres



PCMB1L
1 TEAT MILK BOTTLE WITH LAMB & KID TEAT
Capacity: 2 Litres



PCMM1C
1 TEAT MILK FEEDER WITH MILK MAID CALF TEAT
Capacity: 4 Litres



PCMM1CF
1 TEAT MILK FEEDER WITH PEACH CALF TEAT
Capacity: 4 Litres



PCMM1CL
1 TEAT MILK FEEDER WITH LAMB & KID TEAT
Capacity: 4 Litres



PCMM5C
5 TEAT MILK FEEDER WITH MILK MAID CALF TEATS
Capacity: 30 Litres



PCMM5CF
5 TEAT MILK FEEDER WITH PEACH CALF TEATS
Capacity: 30 Litres



PCMM5CL
5 TEAT MILK FEEDER WITH LAMB & KID TEATS
Capacity: 30 Litres

MILK FEEDING SPARES



PCTC
CAP & MILK MAID CALF TEAT KIT



PCFC
CAP & PEACH CALF TEAT KIT



PCMFT
PEACH CALF TEAT



PCMMT
MILK MAID CALF TEAT



PCCPMT
CAP TO SUIT MILK MAID CALF TEAT



PCCPF
CAP TO SUIT PEACH CALF TEAT



PCLTC
CAP & LAMB/KID TEAT KIT



PCLT
LAMB & KID TEAT



PCCPLT
CAP TO SUIT LAMB & KID TEAT



PCLTBC
CAP TO SUIT SOFT DRINK BOTTLE & LAMB / KID TEAT KIT

Livestock Feeding

TIPS FOR SUCCESSFUL CALF REARING

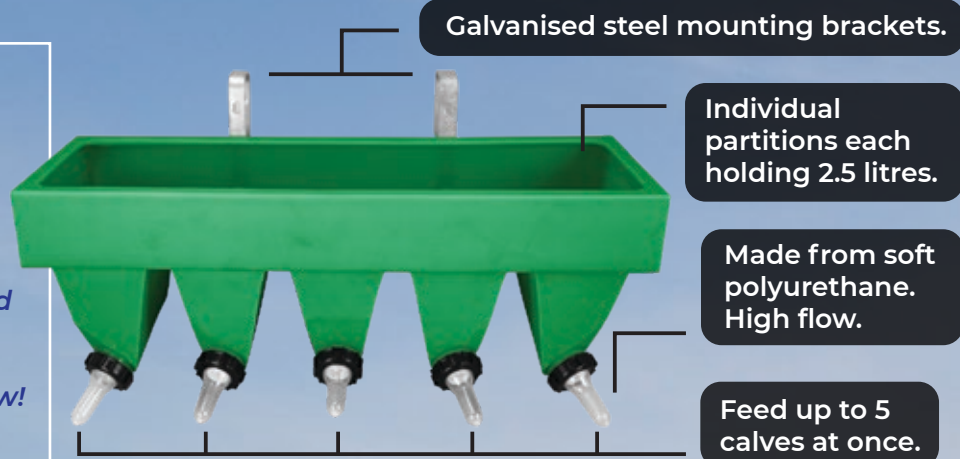
Calves will grow better when fed milk at a temperature of around 40°C. Calves don't thrive as well when fed cold milk as cold milk digestion requires more energy than warm milk digestion, which compromises energy for growing.

It is critical all calves receive colostrum within the first few hours of their birth. Calves which receive inadequate or no colostrum have higher mortality and lower growth rates.



“My favourite Rapid Plas product would have to be my Lamb Bar/Calfateria. I originally set it up for lambs, then used it for a couple of seasons for goat kids, and then this year bought new teats and raised calves. In between it spends a lot of time hanging on the fence and is still good as new! Thank you for such a great quality product that lasts in all weather.”

Daniel Roberts
COOTAMUNDRA



Calibrations for measurement of contents.

Soft, flexible rubber. Closely resembles a cows teat.

Galvanised steel mounting brackets.

Calibrations for measurement of contents.

Convenient handle for ease of use.

SELECTING THE RIGHT TEAT

Our **MILK MAID CALF TEAT** is best suited to feeding calves who don't yet have teeth.

Our **PEACH CALF TEAT** is stronger and better suited for feeding calves once their teeth have come in.



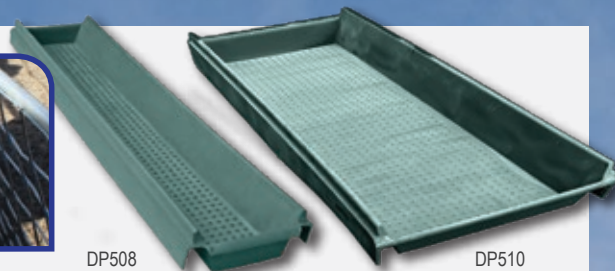
Livestock & Pet Care

RACE TYPE FOOTROT BATH

Stock Type:
Sheep, Goats

Features:

- Has an end to end linking feature that is ideal for placing in a sheep race
- Non slip ridges on floor open the hoof to increase chemical penetration
- Lightweight for easy handling and cleaning
- All poly, heavy duty, UV stabilised to withstand tough Australian conditions
- V-sides to prevent stock from removing their hooves from the chemical



STANDARD FOOTROT BATH

Length: 2400mm
Width: 480mm
Height: 200mm
Capacity: 90 Litres

LARGE WIDTH FOOTROT BATH

Length: 2400mm
Width: 1000mm
Height: 200mm
Capacity: 240L



ELIMINATE HARD WORK

Makes the prevention & treatment of footrot disease an easy task!

CALF SHELTER

Stock Type:
Calves, Dogs

Features:

- Large door access
- Louvre style ventilation
- Stackable, with anti-jam stacking tabs
- Tough, UV stabilised polyethylene
- Tie-down anchorage option by allowing for holes to be drilled in base



DP509



CALF SHELTER

Length: 1700mm Width: 1200mm Height: 1450mm
Doorway W: 670mm Doorway H: 1200mm

AUTOMATIC PET WATERER

Stock Type:
Dogs, Cats, Birds, Poultry

Features:

- Continuous supply of fresh water
- Automatic pressure shut off
- Connects to any standard garden hose for outdoor use
- Connects to a soft drink bottle for indoor use (bottle not supplied)



PTPW

2L PET WATERER

Length: 285mm Width: 240mm Height: 115mm

Auger Hoppers

ROUND

Features:

- Suit 8" - 12" augers
- Rust free tough & flexible poly
- Unique sump for maximum emptying
- Recessed at rear to protect from auger wear
- 2 x Hopper Straps included

260L ROUND AUGER HOPPER

Capacity: 260 Litres Width: 1150mm
Length: 1150mm Height: 750mm



DP902

TRIANGULAR

Features:

- Suit 8" - 12" augers
- Rust free tough & flexible poly
- Unique sump for maximum emptying
- Recessed at rear to protect from auger wear
- 2 x Hopper Straps included

130L TRIANGULAR AUGER HOPPER

Capacity: 130 Litres Width: 1150mm
Length: 1300mm Height: 530mm



DP901

MINI

Features:

- Suit 4" Pencil augers
- Lightweight & flexible
- UV stabilised polyethylene
- 2 x Hopper Straps included

60L MINI AUGER HOPPER

Capacity: 60 Litres Width: 700mm
Length: 600mm Height: 430mm



DP903

EQUINE & ANIMAL CARE

Fence Feeders & Drinkers, Chaff Bins, Mounting Step, Feed Bucket & Scoop

Rapid Plas is based in one of the equine capitals of the world – Tamworth, so it makes sense that you will find a superior range of equine products to suit every horse. Extremely strong, tough and durable poly feeders, drinkers and bins get the job done easily and safely. It is important to protect your horse with our smooth edged products when they are feeding or drinking. It is also recommended to use a Rapid Step when climbing into the saddle to protect your horse from the strain of constant neck-twisting. If you check out horse x-rays you can observe constant pulling to one side of the horse's neck, can cause a repetitive strain injury. Plus, to make the whole thing fun, the 6 colour options really liven up your stables and help you with colour coding your farm.



32 LITRE D-FEEDER

Stock Type:

Horses, Alpacas, Donkeys, Goats

Features:

- Return lip around top prevents feed from being blown or dragged out
- Corrosion proof – ideal for liquid feed supplements
- Galvanised steel mounting brackets
- Proven durability



BEST SELLER

A horse owners favourite, this design is our most popular fence feeder.

32L D-FEEDER PTS14

Length: 440mm
Width: 400mm
Height: 250mm



45 LITRE D-DRINKER

Stock Type:

Horses, Alpacas, Donkeys, Goats

Features:

- 1 piece moulded drinker plus float & cover
- ½" high pressure float valve
- Immensely strong construction
- Galvanised steel mounting brackets
- 2" drain bung for easy cleaning

45L D-DRINKER PTS01W

Length: 540mm
Width: 410mm
Height: 380mm



Equine range available in these colours



FENCE DRINKER

Stock Type:

Horses, Alpacas, Poultry, Dogs

Features:

- Large 2" drain bung for easy cleaning
- 1 piece durable design with float cover moulded in
- Strong solid mounting flanges
- UV stabilised for long outdoor life
- Available without brackets for mounting directly onto fence etc; or with brackets for hanging

PTS48W-NB



PTS49W-NB

8L FENCE DRINKER

Length: 300mm
Width: 300mm
Height: 220mm

25L FENCE DRINKER

Length: 450mm
Width: 370mm
Height: 340mm



HAY FEEDER

Stock Type:

Horses, Alpacas, Donkeys

Features:

- Lid prevents horse pulling biscuit out of hay rack
- Lid can be purchased separately to fit onto existing feeders
- Feed bin prevents valuable feed from falling onto ground
- Zinc plated hay compartment frame & galvanised brackets

CODE	DESCRIPTION	DIMENSIONS (mm)		
		L	W	H
PTS03	Hay rack with lid	600	500	700
PTS03LD	Hay rack lid only (with hinges)			
PTS03NL	Hay rack without lid	600	500	700



KEEP A LID ON IT

Lid design stops horses pulling out the biscuit and bin prevents feed falling onto the ground.

RAPID STEP

Mounting horses, Multi-purpose

Features:

- Reduces strain for both rider, saddle and horse
- No sharp edges, safe for your horse to walk around
- Manufactured from polyethylene and UV stabilised
- Easily carried using the integrated handle
- Safe and secure with wide base and non-slip tread pattern
- Maximum load 75kg



Integrated Handle



SAFETY FIRST

No sharp edges, this step is fully moulded as a 1-piece unit and safe for your horse to walk around.

RAPID STEP

Dia: 715mm
Height: 570mm



PTRS1

CHAFF BIN

Feed storage

Features:

- Hold 1¼ bags of chaff
- Hinged lid - easy access, yet secure storage
- Rust free poly construction
- Space saving modular design



Available in these colours



MULTI-PURPOSE

Versatile storage bins which are weather and rodent resistant. Suitable for numerous uses - chaff, dog biscuits, chook feed or fertiliser.

PFB
**270L
CHAFF BIN**

Length: 600mm
Width: 600mm
Height: 1010mm



BEEHIVE STORAGE CELLS

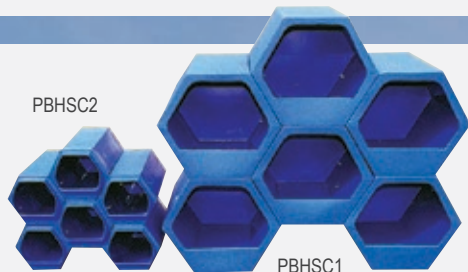
Storage, Poultry nest boxes

Features:

- Multiple uses
- Free standing - no extra supports needed
- Check your stock levels at a glance
- Easy to access
- Cells bolt together for easy installation and additions

Colour: Blue - as pictured

NOTE: Cells sold individually, not as a set as pictured.



**SMALL
HEXAGONAL
STORAGE CELL**

Length: 300mm
Width: 200mm
Height: 175mm

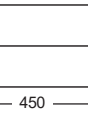
**LARGE
HEXAGONAL
STORAGE CELL**

Length: 450mm
Width: 400mm
Height: 340mm

PBHSC1

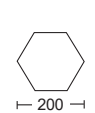


FRONT

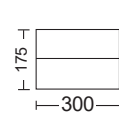


SIDE

PBHSC2



FRONT



SIDE

FEED BUCKET

PTSFB1

- Hand grip on bottom and a spout - for easy pouring
- Flat side on back for easy carrying

Colour: Green - as pictured



EASY TO HANDLE

Strong & durable, these robust buckets and scoops will last for years!

SCOOPS

- Moulded handle and vent hole for ease of use

Colour: Green - as pictured



PTSC1



PTSC3

PTSC2



CODE	DESCRIPTION	CAPACITY LITRES	DIMENSIONS DIA. x H (mm)
PTSFB1	Feed Bucket	20	325 x 370
PTSC1	Feed Scoop	1	125 x 250
PTSC2	Feed Scoop	2.5	165 x 300
PTSC3	Feed Scoop	9	260 x 315

**GET A QUOTE IN
15 MINUTES**



← Use our
**AUTOMATED
QUOTE SERVICE**

rapidplas.com/get-a-quote



RAPID PLAS
GROUP

Life, at it's best®

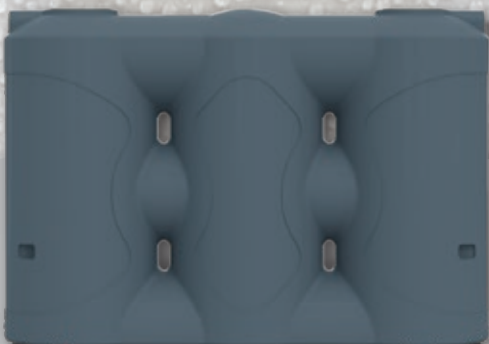
rapidplas.com.au
1800 816 299



**PREMIUM TANK
RANGE**



**VALUE TANK
RANGE**



**RESIDENTIAL
and TRADE**

Yarrin™



FACTORY ADDRESS: 19 Macintosh St, Tamworth NSW 2340, Australia
POSTAL ADDRESS: PO Box 7003, Tamworth NEMSC NSW 2348, Australia
PHONE: (02) 6765 0700 **FAX:** (02) 6765 0780 **EMAIL:** sales@rapidplas.com.au

As of 1st June 2023, this publication
supersedes all previous catalogues.
E&OE. Subject to Rapid Plas Terms &
Conditions available at rapidplas.com.au